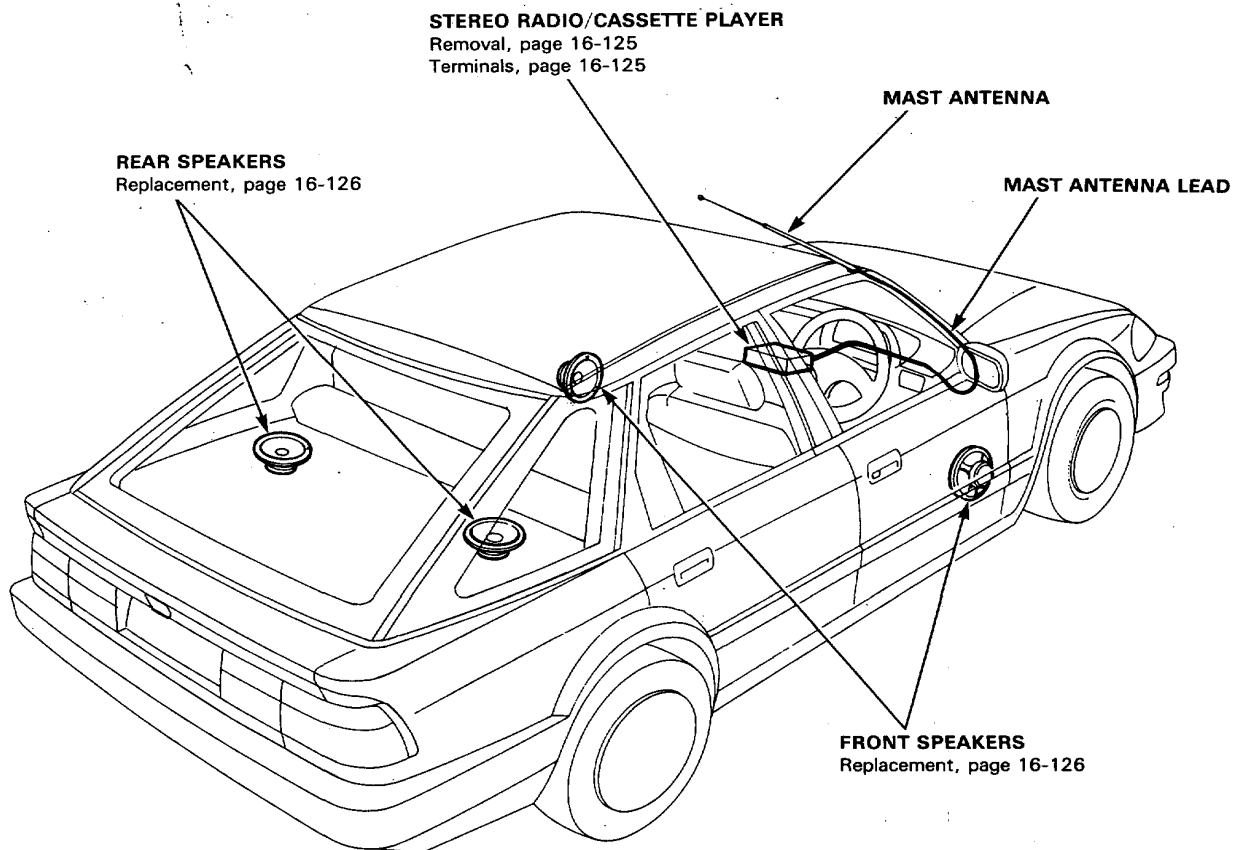


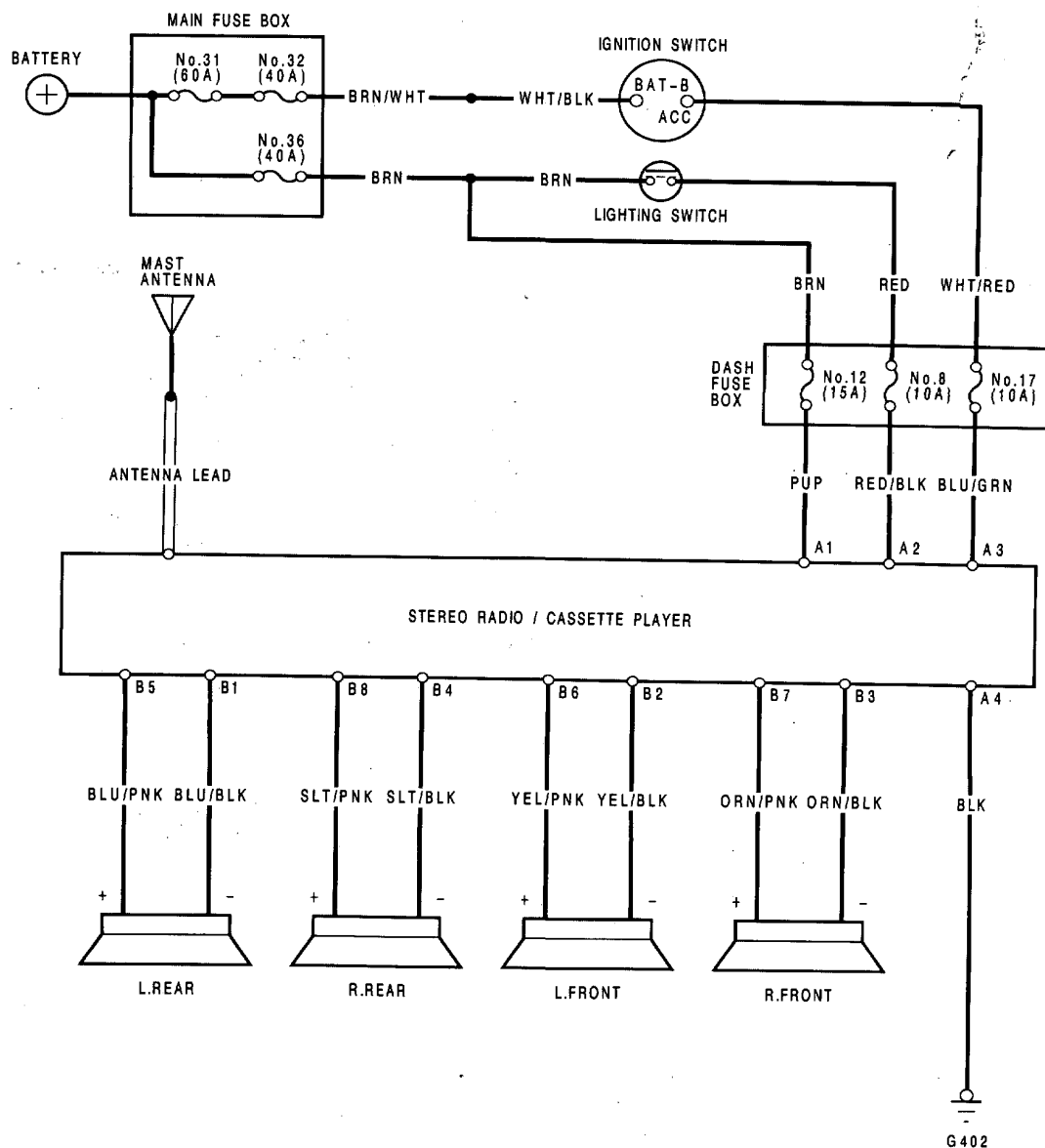
Stereo Sound System

Component Location Index



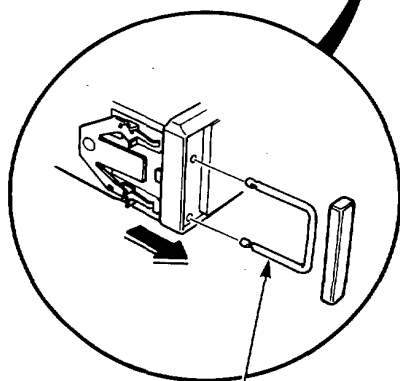
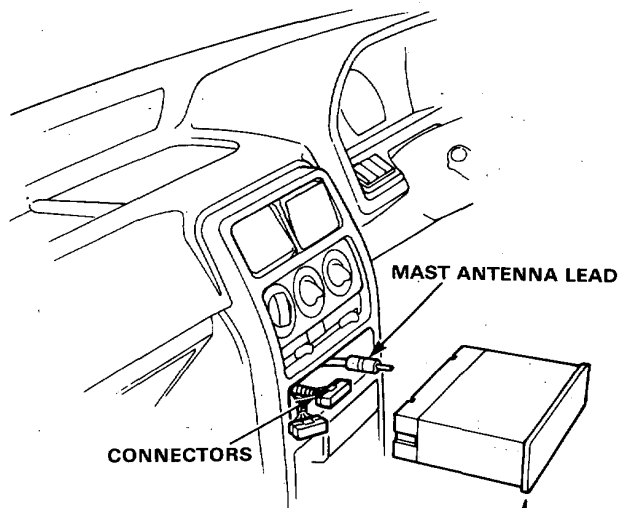
Stereo Sound System

Circuit Diagram



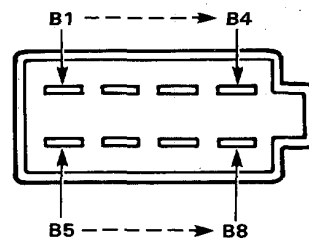
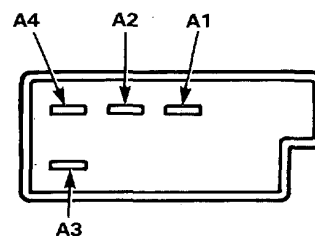


Unit Removal



REMOVER

Unit Terminals



Terminal	Wire	Destination
A1	PUP	Constant power (Tuning memory)
A2	RED/BLK	Light-ON signal
A3	BLU/GRN	ACC (Main stereo power supply)
A4	BLK	Ground

Terminal	Wire	Destination
A1	PUP	Constant power (Tuning memory)
A2	RED/BLK	Light-ON signal
A3	BLU/GRN	ACC (Main stereo power supply)
A4	BLK	Ground

Terminal	Wire	Destination
B1	BLU/BLK	Left rear speaker ⊖
B2	YEL/BLK	Left front speaker ⊖
B3	ORN/BLK	Right front speaker ⊖
B4	SLT/BLK	Right rear speaker ⊖
B5	BLU/PNK	Left rear speaker ⊕
B6	YEL/PNK	Left front speaker ⊕
B7	ORN/PNK	Right front speaker ⊕
B8	SLT/PNK	Right rear speaker ⊕

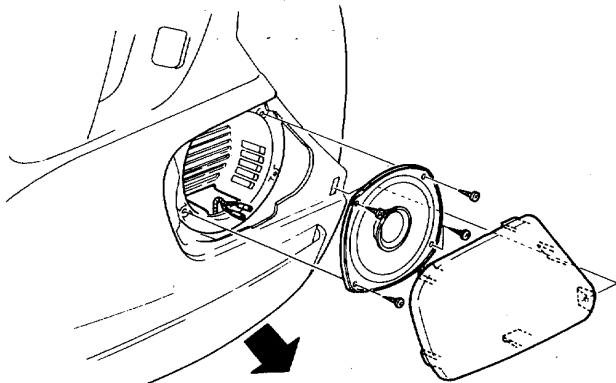
Terminal	Wire	Destination
B1	BLU/BLK	Left rear speaker ⊖
B2	YEL/BLK	Left front speaker ⊖
B3	ORN/BLK	Right front speaker ⊖
B4	SLT/BLK	Right rear speaker ⊖
B5	BLU/PNK	Left rear speaker ⊕
B6	YEL/PNK	Left front speaker ⊕
B7	ORN/PNK	Right front speaker ⊕
B8	SLT/PNK	Right rear speaker ⊕

Stereo Sound System

Speaker Replacement

Front Speakers :

1. Remove the door trim panel.
2. Remove the 4 screws and disconnect the wires then remove the speaker.



Rear Speakers:

1. Remove the upper anchor bolt. (see 14 section).
2. Remove the speaker grille.
3. Remove the 4 screws and disconnect the wires then remove the speaker.

